

## ZENNER Single Body Compound Meters

Model: ZCS

Sizes 2", 3" and 4"

**INTRODUCTION:** ZENNER ZCS Compound Meters are designed for applications where flows are usually medium and high but can occasionally be low. They are for use in measurement of potable cold water in commercial and industrial services where flows are in one direction.

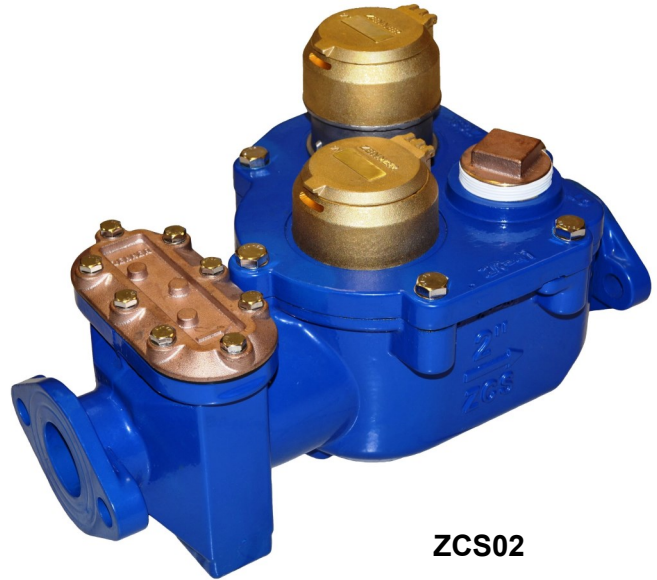
**OPERATION:** ZENNER ZCS Compound Meters combine a turbine type meter for the main flow and a proportionately sized volumetric cartridge type meter for the low flow in one unitized assembly. A change over valve controls the flow of water through the appropriate measuring device. Before the valve opens, all water flows through the low flow meter. As pressure rises the valve opens, allowing water to flow through both meters. Movement of the measuring elements are transmitted to drive magnets, which transmit the motion to driven magnets located within hermetically sealed registers. The magnets are connected to gear trains, which translate the rotations into volume totalization displayed on the register dial faces.

**CONSTRUCTION:** ZENNER ZCS Compound Meters consist of a main case, strainer assembly and a unitized measuring element assembly. The main case and cover are made from epoxy coated cast iron. The unitized measuring element assembly consists of a cover plate, a turbine measuring element, a volumetric cartridge type measuring chamber, a check valve assembly and two sealed registers with shrouds. The strainer assembly includes a brass cover and a Z type stainless steel strainer.

**MAINTENANCE:** ZENNER ZCS Compound Meters are engineered and manufactured to provide long-term service and operate virtually maintenance free. If necessary the unitized measuring element assembly (UME) can be removed from the main case for maintenance. The same UME is used for the 2", 3" and 4" SB Compound meters minimizing the need for a large spare parts inventory. The strainer assembly can be easily removed for cleaning by removing the eight strainer cover bolts.

**CONFORMANCE:** ZENNER ZCS Compound Meters are tested and comply with AWWA C702 performance standards. These Meters comply with the lead-free provisions of the Safe Drinking Water Act and are certified to NSF/ANSI Standards 61 and 372.

**CONNECTIONS:** Companion flanges for installation of meters on various pipe types and sizes are available in bronze or cast iron.



ZCS02

MODEL		ZCS02	ZCS03	ZCS04	ZCS06	ZCS08
SIZE		2"	3"	4"	6"	8"
Maximum continuous (Q3)	USGPM	175	275	440	Available soon	Available soon
High flow rate	USGPM	220	350	600		
Low flow rate	USGPM	.25	.25	.25		
Start-up flow rate	USGPM	.125	.125	.125		
Maximum working pressure	P.S.I.	150	150	150		
Maximum temperature	Deg. F	122	122	122		
Length (L)	Inches	17	18	21		
Height (h1)	Inches	7 1/2	7 1/2	7 1/2		
Width	Inches	10 1/4	10 1/4	10 1/4		
Weight	Pounds	62	68	80		
Number of holes per flange		2	4	8		

